

# Touch the New Way of Printing



## Océ PlotWave 340/360 printing system

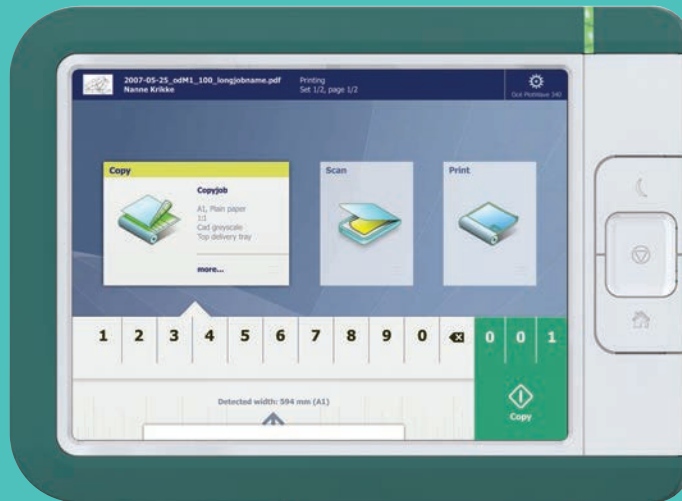
Cloud integrated, advanced large format technical document management



# Touch the New Way of Printing

- NEW! Océ ClearConnect 10.4" color LCD, touchscreen interface with multi-touch
- NEW! Enhanced project collaboration through integrated cloud printing and scanning
- NEW! Avoid expensive errors with intuitive preview functions
- NEW! Océ PowerM® controller designed for today's IT environments





## Océ PlotWave 340/360 printing system

Cloud integrated, advanced large format technical document management

Touch the new way of printing with the Océ PlotWave® 340/360 printing system. The Océ ClearConnect color touchscreen interface supports multi-touch gestures for intuitive control. It's ideal for decentralized printing environments featuring workgroups of CAD professionals who require both productivity and ease of use. Walk-up users will appreciate the ability to access technical document files from their cloud of choice, preview files on the color screen, and print, all from the printer's touchscreen.

# Océ PlotWave 340/360 printing system

## CONNECTS WITH YOUR WORLD

Now printing is as clear and easy as using a tablet with the new Océ ClearConnect multi-touch user panel. You can pan, zoom, swipe, spread and much more. Pull up a document, zoom and pan to different areas. See the orientation of documents with a live preview while scanning or copying to avoid errors. Save time with easy shortcuts.

## GET ACCESS TO THE CLOUD

You can access your projects' documents directly at the printer using the Océ ClearConnect multi-touch user panel. Are your files on a USB stick, on a network location or in the cloud? Just browse and swipe to your files and print them. In addition, you can scan directly to virtually unlimited destinations in the cloud or your Intranet. When you have a file on your iPad® mobile device, just use the WiFi infrastructure of your company to access the Océ PlotWave 340/360 printer and print via the Océ Publisher Mobile app. Or print from your desktop PC via Océ Publisher Select™ software to manage more complex document sets.



WITH OPTIONAL SCANNER EXPRESS II



WITH OPTIONAL REAR DELIVERY TRAY



WITH OPTIONAL OCÉ ESTEFOLD 2400 FANFOLD



WITH OPTIONAL OCÉ ESTEFOLD 4312 FOLDER  
AND EXTENDED STACKER



### 1 OCÉ CLEARCONNECT INSTANT MULTI-TOUCH PRINTING

Use the multi-touch panel like a tablet or smartphone. Easily control the printer with your fingertips with the simple screen movements you are used to. Pan, zoom, swipe, spread and much more. Zoom in on details of a drawing. Check that documents are correctly positioned using the live preview to avoid errors. Print from and scan to your cloud, mobile phone, USB flash drive or network. Save time and avoid costly printing mistakes with easy shortcuts and instant green button printing.

### 2 NEAT DOCUMENT DELIVERY

Get nearly collated and stacked documents of up to 50 E-size plots on the top delivery tray. Originals stay clean with the optional front original tray. You do not need to make space for a large receiving table. Also very practical time savers are the inline Océ folder options. Fully integrated with your printer, they generate quality folded documents automatically so you can keep your desk clean and organized.

### 3 GET BETTER COLOR SCANNING RESULTS WITH OCÉ COLOR IMAGE LOGIC TECHNOLOGY

This technology automatically compensates for wrinkles and light colors to produce superior results. Originals are inserted face-up and paper width is detected automatically to minimize errors and waste.

### 4 ENERGY EFFICIENT OCÉ RADIANT FUSING TECHNOLOGY FOR FAST PRINTING

The Océ PlotWave 340/360 provides instant start-up time and reduced energy consumption. The printer heats only when printing. When in idle mode, it is cold and uses almost no energy. With the Océ PlotWave 340/360 you don't need a trade-off between speed and energy consumption.

### 5 AUTOMATED ROLL CHANGING

Reduces physical strain and effort. Simply place the media roll on the built-in roll loading station. Paper is fed into the printer, cut and sized — completely automatically.

### 6 RELIABLE PERFORMANCE

Océ high resolution Pico Printing at 600 x 1200 dpi improves print quality dramatically. The system is constructed out of hard-wearing materials for a longer life.

### 7 CLEAN TONER SYSTEM

Completely closed toner system is within easy reach. Toner stays inside the printer, only where needed, to ensure high quality prints throughout the life of the system.

### 8 FITS YOUR WORKFLOW

Make sure not only your printing system is productive but that your entire workflow is as efficient as possible with the right software for managing print jobs.

## HIGH EFFECTIVE SPEED WITH INSTANT PRINTING

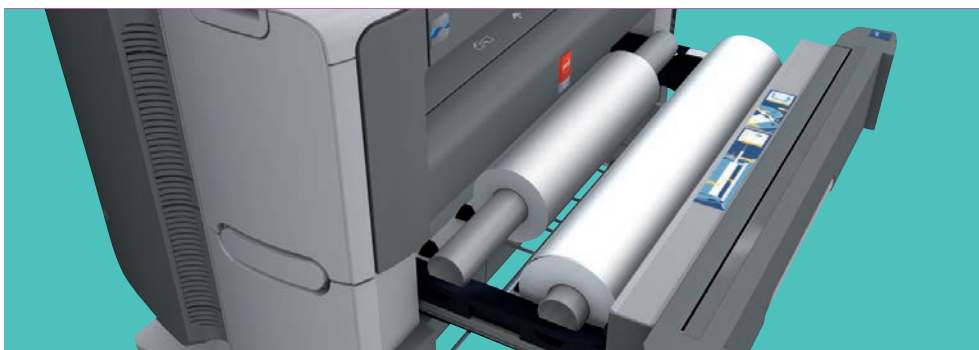
Work faster by minimizing waiting time and using less energy. Print up to 4/6 D-size/A1 plots in 1 minute, with virtually no warm-up time. From cold sleep to print in hand — in less than 40 seconds. Compared to a slow 4 minutes with conventional printers, this easily saves you an hour a day in printing delays, increasing your effective speed up to 300%. No trade off between energy consumption and getting a fast first print thanks to the energy efficient Océ Radiant Fusing technology.

## AVOID EXPENSIVE ERRORS

Thanks to the intuitive preview functions on the Océ ClearConnect user panel or in Océ Wide Format Printer Driver 2.0 for Microsoft® Windows® you get extra help printing complex drawings correctly the first time.

Potential errors are visible in the “What You See Is What You Print” preview. Prevent fold lines from being visible in your print/scan or other errors thanks to Océ Color Image Logic™ technology.

The Océ PlotWave 340/360 printing system maximizes your productivity and minimizes your print and labor costs.



TECHNOLOGY	
Description	Black & white all-in-one large format print/copy/scan system with color scanner
Imaging technology	Electrophotography (LED), organic photoconductor (OPC), clean closed toner system, Océ Radiant Fusing technology
Toner	Océ black toner: 400 grams per bottle
Speed	Black & white: Océ PlotWave 340: 4ppm (D-size/A1); Océ PlotWave 360: 6ppm (D-size/A1)
Resolution	600 × 1200 dpi
GENERAL	
Configuration	Multifunctional or printer only
Warm-up time	Less than 1 second, thanks to Océ Radiant Fusing technology
First print time	31 seconds (D-size/A1) From sleep mode: 40 seconds (D-size/A1)
Size main engine (W × D × H)	60.6" × 31.5" × 58.9" (1,527 × 800 × 1,495 mm) including top delivery tray
Weight main engine	397 lbs. (180 kg)
Certifications	EPA ENERGY STAR®, FEMP, TÜV GS, CETECOM, CE, UL, cUL, CB, FCC Class A, RoHS
PAPER HANDLING	
Paper rolls	1 or 2 rolls
Maximum paper capacity	Up to 1,300 ft., 650 ft. on a roll (up to 400 m, 200 m per roll)
Paper weight	18 – 28 lb. Bond; 60 – 110 g/m <sup>2</sup>
Roll width	11" – 36" (297 – 914 mm)
Output length	16.5" – 577.4 ft. (419 mm – 176 m)
Output delivery	Top delivery tray with air separation technology; up to 50 E/A0-size plots collated
Media type	Paper: Plain paper, Transparencies, Recycled paper, Colored paper Film: Polyester, Antistatic, Contrast
USER INTERFACE	
Description	Océ ClearConnect multi-touch interface
Size (W × D × H)	11.8" × 8.7" × 1.6" (300 × 220 × 40 mm), Touch screen: 10.4"
Resolution	800 × 600 pixels
Number of colors	16.2 million
Technology	Projective capacitive touch
Operation	3 hard buttons: [Wake-up], [Stop, interrupt, abort], [Home] Multi-touch functions: pinch, swipe, flick, zoom, pan
Features	View optimization: Tilt (-4 to +45 degrees) and rotate (-45 to +180 degrees) Status light (red, orange, green) USB interface with indication light
CONTROLLER	
Description	Océ PowerM controller with Windows® Embedded Standard 7
Client Operating System Support	Océ print driver for Windows® 7 (32 & 64-bit)/Windows Vista® (32 & 64-bit)/Windows XP®/Windows Server 2003®/Windows Terminal Server®, Citrix® Metaframe and Presentation Server Adobe® Postscript® 3™ driver for Windows XP® and Server 2003®, Mac® OS v9, OS X (only Adobe® Postscript® 3/PDF driver supported)
Processor	Intel Celeron T3100 @1.90GHz
Memory	4 GB DDR2
Hard disk	500 GB
Interface	Ethernet 100 Mbits/s, 1 Gbit/s
Page description language	TIFF, JPEG, HP-GL, HP-GL/2, DWF, Calcomp 906/907/951, CALS, NIRS, NIFF, ASCII, C4
Security	E-shredding, IPsec, HTTPS, extended security protection for administrator, audit logging
Options	Adobe PostScript 3/PDF file interpreter
Cloud	WebDAV





## SCANNER

Description
Scan resolution
Scan speed
Scan format
Scan destination
Original width
Original length
Original thickness
Zoom
Preset modes
Size scanner (W × D × H)
Weight scanner

## ENVIRONMENTAL

Sound power level
Ozone emissions
Power requirements
Power consumption
Recyclability

## WORKFLOW

Description
Printer drivers
Job submission
Job management
Accounting

## OPTIONS

Hardware
Software

Contact Image Sensor (CIS) with Océ Color Image Logic technology
600 × 600 dpi
Copying: Up to 31.8 ft./min. (9.7 m/min.) Black & white scanning: Up to 47.9 ft./min. (14.6 m/min.) Color scanning: Up to 15.7 ft./min. (4.8 m/min.)
TIFF, PDF, PDF/A, JPEG, CALS, multi-page PDF, multi-page PDF/A and multi-page TIFF
Local USB flash drive, FTP, SMB, Controller, mobile device via Océ Mobile WebTools
8.2" – 36" (208 – 914 mm)
8.2" – 52.5 ft. (208 mm – 16 m)
Maximum 0.03" (0.8 mm) non-rigid documents
Scale to standard format Custom: 10 – 1,000%
Lines & text, Lines & text draft, Folded lines & text, Photo, Colored, Dark original, Blueprint
43" × 12" × 5.5" (1,097 × 308 × 140 mm)
54 lbs. (24.5 kg)

Standby mode: maximum 26 dB Print mode: maximum 58 dB
0.001 mg/m <sup>3</sup>
100 – 120 V, 200 – 240 V; 50/60 Hz; 20 – 10 A
Sleep mode: 39 W Standby mode: 92 W Print mode: 1.5kW Per print: 45 Wh per E-size/A0 (EPA ENERGY STAR TEC method)
Hardware: made of steel or highly recyclable plastics: up to 95% of the engine can either be upcycled or recycled Remaining 5% is non-toxic waste Toner: bottles made of highly recyclable HDPE (High Density Polyethylene)

Concurrent print, copy and scan of single documents or sets
Microsoft® certified Windows® driver 2.0, Adobe® Postscript 3™ driver
USB flash drive, Océ Mobile WebTools for iOS, Android, Symbian and BlackBerry®, Océ Publisher Mobile for iPad, Océ Publisher Express, Océ Publisher Select software
Personalized Smart Inbox with history, Manage queue, Océ Express WebTools, Secure controller access, remote shutdown and restart
Option: Océ Account Center

Océ Scanner Express II, second roll unit, front original tray, Océ Estefold 2400 fanfold, Océ 4312 Estefold fullfold with Extended Stacker, Removable Hard Drive Kit with optional additional Hard Drive, and Rear Delivery Tray
Océ View Station, Océ Client Tools™ software, Adobe® Postscript 3/PDF file interpreter, Océ Repro Desk® Studio, Océ Repro Desk Web Client, Océ Repro Desk Professional

## Environmental Certifications



**Mixed Sources**  
Product group from well-managed  
forests and other controlled sources  
www.fsc.org Cert no. SCS-COC-00856  
© 1996 Forest Stewardship Council



## Awards



communication  
design  
award

2006



product  
design  
award

2006



product  
design  
award

2007 gold



product  
design  
award

2008



## Partners Certifications



### Creating global leadership in printing

Canon and Océ join forces to create the global leader in the printing industry. For our customers this combines Canon and Océ technology with the support of the Océ direct sales and service organizations. Look to the new Canon-Océ combination for:

- Enterprise printing in the office and corporate printroom
- Large format printing of technical documentation, signage and display graphics
- Production printing for marketing service bureaus and graphic arts
- Business services for document process outsourcing

**Canon**  
CANON SOLUTIONS AMERICA

**Silver  
Partner**

**Canon**

CANON SOLUTIONS AMERICA

The Océ logo, Océ, Océ PowerM, Océ Image Logic, Océ PlotWave, and Océ Repro Desk are registered trademarks of Océ-Technologies B.V. Océ Color Image Logic, Océ Publisher Select, and Océ Client Tools are trademarks of Océ-Technologies B.V. CANON is a registered trademark of Canon Inc. in the United States and may also be registered trademarks or trademarks in other countries. All other referenced product names and marks are trademarks of their respective owners and are hereby acknowledged. ©2013 Canon Solutions America, Inc. All rights reserved.